

Content available at: <https://www.ipinnovative.com/open-access-journals>

International Journal of Pharmaceutical Chemistry and Analysis

Journal homepage: <https://www.ijpca.org/>

Review Article

Marine plants: Extraction and their medicinal importance

Krishna R. Gupta^{1,*}, Tejaswini P. Masne¹, Milind J. Umekar²¹Dept. of Pharmaceutical Chemistry, Smt. Kishoritai Bhoyar College of Pharmacy, Nagpur, Maharashtra, India²Smt. Kishoritai Bhoyar College of Pharmacy, Nagpur, Maharashtra, India

ARTICLE INFO

Article history:

Received 19-08-2023

Accepted 08-09-2023

Available online 15-09-2023

Keywords:

Marine

Extraction

Chemical Compound

Therapeutic Effects

medicinal value

ABSTRACT

The marine is the primary source of uniquely structured natural materials, which are primarily found in living things. Marine algae have long been utilised as food and medicine and are crucial to the ecology. Marine creatures have the potential to be abundant sources of highly bioactive secondary metabolites that could serve as valuable starting points for the creation of novel pharmaceuticals. The sea is regarded as the largest remaining pool of natural molecules to be assessed for therapeutic activity and provides a tremendous resource for novel compounds due to the fact that marine animals make up around half of all species in the world. It is a real fact that the importance of marine organisms as a source of new substances is growing. Algae can be divided into two primary categories: macroalgae (seaweeds), which includes green, brown, and red algae, and microalgae, which includes blue-green algae, dinoflagellates, bacillariophyta (diatoms), etc. The natural bioactive compounds found in marine algae have been demonstrated to be a rich source of anti-diabetic, anti-inflammatory, antiviral, antifungal, hypolipidemic, antioxidant, anti-hypercholesterolemia, antibacterial, and antineoplastic activities. They generate fresh secondary metabolites with potential for use as pharmaceuticals because of their biological activity. The potential pharmacological, therapeutic, and research applications of these substances have been covered in this review.

This is an Open Access (OA) journal, and articles are distributed under the terms of the [Creative Commons Attribution-NonCommercial-ShareAlike 4.0 License](https://creativecommons.org/licenses/by-nc-sa/4.0/), which allows others to remix, tweak, and build upon the work non-commercially, as long as appropriate credit is given and the new creations are licensed under the identical terms.

For reprints contact: reprint@ipinnovative.com

1. Introduction

An important and reliable source of effective therapeutic leads that come from Earth's biodiverse flora and fauna are natural substances generally referred to as "secondary metabolites" (the end-products of gene expression).¹ A wide range of biological sources, including both prokaryotic (eubacteria, 92 cyanobacteria), and eukaryotic species, have allowed for the identification of more than 30,000 chemicals of marine origin over the course of five decades of persistent investigation (fungi, dinoflagellates, algae, sponges, cnidarians, bryozoans, 93 mollusks, ascidians, and echinoderms).^{2,3} The Earth's oceans, which cover

over 70% of the planet's surface, present an extensive reservoir for the exploration of potential therapeutic agents. In recent decades, a multitude of novel compounds have been unearthed from marine organisms, displaying intriguing pharmaceutical properties. This has led to the acknowledgment of marine organisms as promising candidates not only for the derivation of new bioactive substances for pharmaceutical advancement but also as a source of diverse biologically active compounds.

Several bioactive metabolites have been uncovered through screening initiatives, originating from cyanobacteria and marine algae. These chemical entities exhibit a broad spectrum of biological activities and possess varied chemical structures, garnering interest from biopharmaceutical enterprises. The medicinal worth of

* Corresponding author.

E-mail address: Krg1903@gmail.com (K. R. Gupta).

cyanobacteria dates back as early as 1500 BC, evident in the historical utilization of *Nostoc* for treating conditions such as gout and various forms of cancer. Over 40 distinct species of Nostocales have been identified as producers of around 120 distinct metabolites, demonstrating activities encompassing anti-HIV, antifungal, anticancer, antimalarial, and antimicrobial properties.⁴



Fig. 1: Representation of different types of macroalgae (Brown algae, red algae and green algae) and microalgae (Phytoplankton).

Marine algae stand out as prominent contributors to the extensive pool of crucial renewable resources within the marine ecosystem.⁵ Constituting biomass in this environment, they represent a class of rudimentary plants devoid of authentic root, stem, and leaf structures. These organisms exhibit a diverse array of chemically dynamic metabolites within their vicinity, which could potentially serve as a means to safeguard themselves from competing settling organisms. This classification positions them within the Thallophyta division of the plant kingdom. The taxonomy of marine algae encompasses four distinct groups, delineating their varying attributes and characteristics.⁶ Marine algae encompass a rich variety of distinct species, delineated primarily into two categorical divisions: microalgae and macroalgae. Microalgae, typified by phytoplankton, inhabit the aqueous column, whereas macroalgae, commonly referred to as seaweed, manifest as plant-like organisms, spanning in magnitude from several centimeters to numerous meters in extension. A case in point is the colossal kelp, which ascends from the seabed to create expansive submerged forests. Seaweeds have acclimatized to diverse habitats, thriving within diminutive intertidal rock pools proximal to the coastline, as well

as colonizing waters several kilometers offshore, where the aqueous depths still permit adequate luminosity for photosynthetic activity. Algae are broadly categorized into three groups based on pigmentation of their algal body, or thallus. These divisions are chromatically represented by brown algae (phaeophytes), green algae (chlorophytes), and red algae (rhodophytes) (Fig.no. 1). Brown and red algae primarily inhabit marine domains, with certain species of red algae even inhabiting depths marked by exceptionally low light levels. In contrast, green algae inhabit both marine and freshwater ecosystems.⁷ In this review, the most recent findings in the study of biogenic synthesis of components derived from marine algae and seagrasses are compiled. The review offers crucial information on the developments in marine natural products, the types of inventions made to harness the purported medicinal properties of isolated marine compounds, the types of pharmaceutical products, as well as the key players and nations actively engaged in this field of study.

2. Extraction Strategies and Limitations

Numerous standard, non-conventional, or modern approaches have been developed and used to extract bioactive chemicals while taking into account the structural and compositional characteristics of target sources. Many traditional extraction techniques include preparatory fractionation of the parent material or crude extract, which makes it difficult to use them successfully on a large scale. While in other cases, several multi-step processing procedures during maceration, excessive water, energy, and chemical use can raise serious questions about the final product's quality and quantity. Longer extraction times, pure solvents, the consumption and evaporation of extra solvent, shortened extraction yields, heat degradation of thermolabile compounds, etc. are additional key drawbacks of classic extraction techniques.⁸ To address various limitations inherent in current methodologies, several promising and cutting-edge contemporary extraction methodologies, including techniques such as Enhanced Aqueous Extraction (EAE), Supercritical Fluid Extraction (SFE), and Microwave-Assisted Extraction (MAE), among others, have been documented in existing literature. Furthermore, the aforementioned advanced extraction approaches are also classified as environmentally sustainable due to their adherence to principles outlined by the green agenda.^{9,10} In contrast to conventional methodologies, state-of-the-art contemporary extraction strategies offer substantial advantages, including environmentally friendly processing conditions, minimal or absent utilization of hazardous substances, safer solvent auxiliaries, efficient utilization of water and energy, reduced byproduct formation, employment of renewable raw materials, favorable cost-efficiency ratio, simplified sample preparation, optimal

efficacy, prevention of degradation, and safeguarding against undesired chemical transformations.

3. EAE – (Enzyme-assisted extraction processing and workflow)

Instead of being a genuine extraction process, this method is typically regarded as a pre-treatment strategy. The EAE-based processing and extraction environment's whole workflow is depicted in Fig. 2. EAE is frequently used to liberate inner bound molecules that are difficult to reach using a standard solvent extraction technique. Bioactive substances can occasionally be internally coupled via hydrogen or hydrophobic bonding, depending on the source and makeup of the material. Such materials are therefore put through EAE, which also improves the overall extraction yield. The release of highly valuable biologically active molecules and functional entities, as well as associated secondary metabolites, is efficiently facilitated by the mass transfer phenomena that is also induced by EAE.¹¹ From a workflow or action mechanism standpoint, adding extra amounts of certain enzymes like pectinases, oxidoreductases, cellulases, etc. helps break down the cell wall and hydrolyze polysaccharides and lipid compounds.¹² In the end, EAE also cause the recovery of intracellular highly valuable biologically active chemicals and associated functional entities, which are difficult to extract using traditional techniques. EAE offers notable advantages over conventional tools in practise, including (i) increased selectivity, (ii) induced efficacy, (iii) ease in extraction, (iv) safer and friendlier working conditions, (v) minimal energy requirements and usage, (vi) no or less use of harsh substances, (vii) higher end yield, (viii) no involvement of wasteful protection or deprotection stages, (ix) ease in isolation and product recovery, and (x) process recyclability.^{13,14}

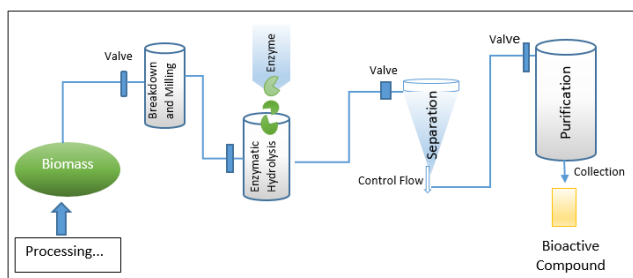


Fig. 2: Flow diagram of EAE of high-value biologically active molecules from marine biomass.

3.1. SFE – (Supercritical fluid extraction processing and workflow)

SFE is now widely used to extract high-value biologically active chemicals and functional entities, such as pigments

and fatty acids. It has distinguished itself in recent years as a green method.¹⁵ SFE has many benefits over other extraction techniques used in practise, including excellent extraction selectivity, rapid processing, and minimal product degradability,^{16–18} all without the use of non-food grade solvents.¹⁸ In addition to the benefits already mentioned, SFE uses far less solvent than other extraction methods.¹⁹ SFE uses supercritical fluids, as implied by its name, such as carbon dioxide (CO₂), in its workflow or as an extraction mechanism to extract bioactive components from the source material.^{20,21} Due to its critical temperature, which is (31 °C), which is near to room temperature, CO₂ is regarded as a suitable supercritical fluid in SFE. Additionally, it provides a low critical pressure of 74 bars with the option to function at moderate pressures, which typically vary from 100 to 450 bar.²¹ Figure 3 displays the whole workflow of the SFE-based processing and extraction environment. The solubility of the target bioactive biomolecules in the SFE is strongly influenced by supercritical fluidic dynamics. Among other influencing factors, the sample size and concentration both expressly contribute to the greater extraction yield and strengthen the cost-effectiveness of the overall extraction process.

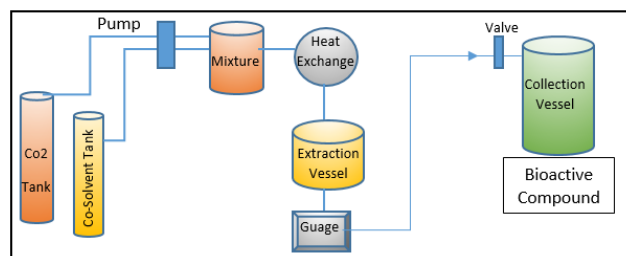


Fig. 3: Flow diagram of SFE of bioactive compounds from marine biomass

3.2. MAE – (Microwave-assisted extraction processing and workflow)

On the active exploitation of MAE in various industrial processes, a wealth of knowledge is accessible. Most frequently, MAE has been used to extract various industrially significant, high-value bioactive chemicals from a variety of materials, including phytonutrients, polyphenolic molecules, and components with medicinal activity.^{22–24} The MAE-based processing and extraction environment's whole workflow is depicted in Figure 4. Although the marine biome is a rich supply of high-value biologically active chemicals and functional entities, few extraction efforts have been conducted in light of marine sources. MAE has so far been utilised to extract highly valuable physiologically active molecules/functional entities from seaweeds and other algal sources using alkaline galactans, carrageenans, and agar.^{25,26} From the

workflow or action mechanism perspectives, the source material is exposed for a brief length of time in a confined area to microwave radiations, which are non-ionizing electromagnetic waves at N2000 MHz. Solvents are heated by the microwaves, which cause polar molecules to move and dipoles to rotate. In order to prevent sample boiling and/or heat deterioration, the irradiation is repeatedly performed with unbroken cooling phases for the best efficient extraction. The transfer of target bioactive compounds from the source matrix to the heated solvent is facilitated by such distinctive motion movements.²⁷ The source material is first homogenised with the solvent to begin the extraction process. The most often used MAE solvents, which have varying polarity indices, include acetone, acetonitrile, ethanol, methanol, and dichloromethane. The microwave theory states that the electromagnetic waves are surrounded by two oscillating perpendicular fields, namely the magnetic and electric fields. The first, the electric field, is what causes sample heating.²⁸ While the two phenomena (i) dipole rotation and (ii) ionic conduction determine the heating principle.^{28–31}

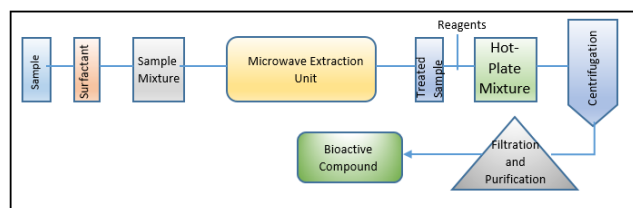


Fig. 4: Flow diagram of MAE of bioactive compounds from marine biomass.

4. Medicinal and pharmacological properties

Seaweeds have been consumed in large quantities as food from the beginning of time since they are the primary source of vitamins and minerals.³² The extracts and its derivatives work well as dietary supplements.³³ The antibacterial, antiviral, antifungal, antiallergic, anticoagulant, anticancer, antifouling, and antioxidant actions have also been used in addition to nutritional support against many biological illnesses.³⁴ *Sargassum wightii*, a marine brown alga, has been reported by Yuvaraj³⁵ as having anti-tumor, anti-inflammatory, antioxidant, and antibacterial properties. Seaweeds contain strong anti-inflammatory and antioxidant characteristics that are essential in the fight against a number of illnesses, including cancer, atherosclerosis, chronic inflammation, and cardiovascular disease as well as the ageing process.^{35,36} Additionally, it slows the development of cancer cells.³⁶ To prevent heart disease and stroke Utilizing seaweed can aid in lowering plasma cholesterol, which may lower the chance of developing cardiovascular disease.³⁷ Antifungal and antibacterial properties *Gracilaria corticata*'s crude

methanol extracts are effective against both microbial and fungal growth. Methanol demonstrated the highest antibacterial activity against various pathogenic bacteria, including *Staphylococcus aureus*, *Streptococcus pyogenes*, *Streptococcus epidermis*, *Bacillus subtilis* and *Bacillus cereus*, *Klebsiella pneumoniae*, and *Enterobacter aerogenes*, among other solvent extracts like acetone, chloroform, and hexane-ethyl acetate.³⁸ Another excellent source of an antibacterial agent is found in the *Gracilaria corticata*, *Sargassum wightii*, and *Turbinaria ornate*.³⁹ As with methanol extracts against *Escherichia coli*, *Staphylococcus*, and *Proteus* species, ethanol extract demonstrated the highest antibacterial activity against *Staphylococcus* species.⁴⁰ anti-inflammatory quality When tested against mouse ear edoema and erythema, methanol extracts of the seaweeds *Undaria pinnatifida* and *Ulva linza* shown greater anti-inflammatory efficacy. Seaweeds *Undaria pinnatifida* and *Ulva linza* effectively reduce edoema. These two seaweeds also had the greatest erythema suppression.⁴¹

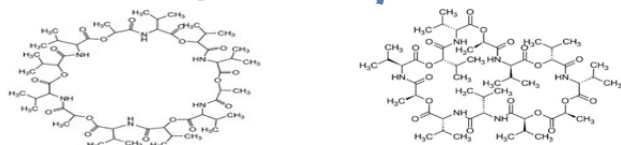
Seaweeds as cancer preventatives The most significant sources of novel human medicinal chemicals are found in seaweeds. Experimental evidence suggests that several seaweed extracts can either weaken or completely eradicate cancer. Seaweed consumption has also been linked to the aetiology of breast cancer as a potential preventive factor.⁴² Both colorectal and breast cancer have been demonstrated to be resistant to the brown alga *Fucus* spp.⁴³ Different seaweeds have been shown to have an anticancer effect on human colon and breast malignancies, according to research by Ghislain et al.^{43–45} Chinese medicine employed *Laminaria* sp. to cure cancer in the past, and old ayurvedic scriptures also mention it. Chinese medicine employed *Laminaria* sp. to cure cancer in the past, and old ayurvedic scriptures also mention it.⁴⁵ Incorporating seaweed into your diet can help lower your risk of developing breast cancer and other cancers. a number of mechanisms via which the growth rate of cancer may be slowed. It entails lowering plasma cholesterol, binding biliary hormones, inhibiting cell adhesion, inducing apoptosis, binding harmful substances, and supplementing the diet with crucial trace elements. Diabetic prevention When used to treat diabetic rats, an aqueous extract of *Ulva fasciata* shown a good and notable change when compared to other conventional medication. Abirami (2013)⁴⁵ conducted a 28-day oral therapy experiment on diseased rats. During pretreatment with *Ulva fasciata* aqueous, he observed a considerable reduction in blood glucose and glycosylated haemoglobin levels. Abirami (2013)⁴⁵ conducted a 28-day oral therapy experiment on diseased rats. During pretreatment with *Ulva fasciata* aqueous, he observed a considerable reduction in blood glucose and glycosylated haemoglobin levels.

4.1. Anti-Cancer Activity

Streptomyces fulvissimus (ZZ40) is a species of bacteria that was isolated from the marine longitudinal seaweed *Haliplanella lineata* and was found in Wuhan Center, China. It produces streptomycin and streptomycin ketone chemicals. The Zhejiang University asserts that the substances are effective anti-tumor agents for the treatment of glioma, the most prevalent brain tumour with a high fatality rate.⁴⁶ As studied utilising human glioma U87MG cells, tricarboxylic acid cycle enzyme aconitase 2 (ACO2), and oxidative phosphorylation cytochrome C, these drugs exhibit considerable anti-glioma action by specifically targeting numerous critical enzymes of glioma glycolysis (CytoC).



Haliplanella lineata - seaweed

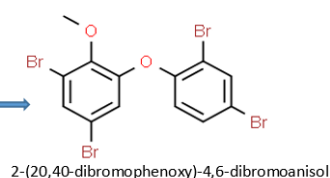


4.2. Antimicrobial Activity

Cladophora algae have been shown by M. Kuniyoshi to exhibit antibacterial activity against specific microbes in yet another investigation. To obtain 2-(20,40-dibromophenoxy)-4,6-dibromoanisole, the green algal extract of *Cladophora fascicularis* was separated using several chromatographic procedures. Additionally, it actively impeded the development of *S. aureus*, *Bacillus subtilis*, and *E. coli*.⁴⁷



Cladophora Algae



4.3. Antifungal activity

Capisterones, which are sulfate esters of triterpenes found within the green algae *Penicillus capitatus*, exhibit potent antifungal activity against the algal pathogen *Lindera thalassiae*.⁴⁸ Crude extracts from certain red algal species were examined for the presence of antibiotic activity against few pathogenic fungi.⁴⁹ The eminent fungicidal activity

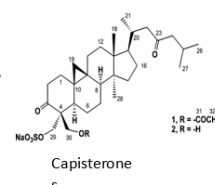
was found in marine macroalgae to recover patients from chronic asthmatic states. In particular, *L. paniculata* was studied to have excellent antifungal activity and so it is recommended as a promising candidate to attain a novel antifungal agent.⁵⁰



Penicillus Capitatus -
Brush like Seaweeds



Penicillus
Capitatus



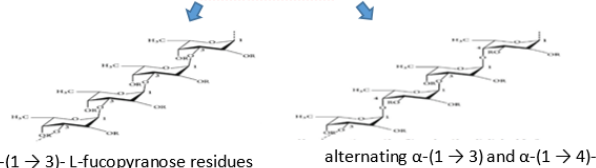
Capisterone

4.4. Antiviral activity- Mechanism of sulfated polysaccharide

Sulfated polysaccharides from marine sources have unusual structures that have antiviral effects. By directly inactivating virions before to infection or by preventing its proliferation inside the host cell, it prevents several stages of the viral life cycle. As a result, polysaccharide-rich seaweeds play a significant role in the discovery and creation of antiviral medications. The main phases of a virus's life cycle, which vary depending on the species, include attachment, penetration, uncoating, biosynthesis, viral assembly, and release.⁵¹ Alternative units of α -(1-3)-linked and α -(1-4)-linked L-fucopyranose are present in the fucoidan from the fungi *Fucus evanescens* and *Ascophyllum nodosum*. A heterogeneous sulfated polysaccharide called fucoidan makes up 25–30% of the dry algal weight. It has a backbone made of L-fucopyranose residues that are α -(1-3) or alternate α -(1-3) and α -(1-4) connected L-fucopyranosyls.^{52,53}



Fucus evanescens



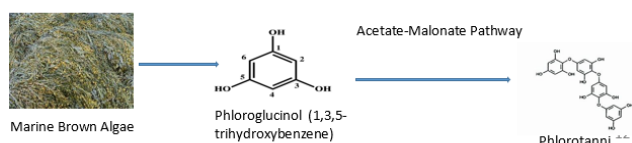
α -(1 \rightarrow 3)-L-fucopyranose residues

alternating α -(1 \rightarrow 3) and α -(1 \rightarrow 4)-

4.5. Antioxidant activity

In the later phases of cancer development, antioxidants are crucial. There is mounting evidence that oxidative mechanisms encourage the development of cancer. In recent years, numerous algae species have also been found to be able to stop the growth of cancer cells

by scavenging free radicals and active oxygen and preventing oxidative damage.⁵⁴ Antioxidants are likely the molecules in algae that are most important and have garnered the most attention. In the fight against numerous illnesses (such as cancer, chronic inflammation, atherosclerosis, and cardiovascular disorders), antioxidants are regarded as important molecules.⁵⁵ Phlorotannins, a type of polyphenol found in marine brown algae, are recognised as possible antioxidants. Phloroglucinol (1,3,5-trihydroxybenzene) monomer units are polymerized to form phlorotannins, which are produced by marine algae using the acetate-malonate pathway. Additionally, it has been demonstrated that sulphated polysaccharides extracted from marine algae have both in vitro and in vivo radical scavenging properties. However, biochemical scientists have several techniques to extract bio-active compounds from algal biomass.⁵⁶



4.6. Chemical profiling of crude extract

Since extracts are combined with contaminants and it is crucial to separate them, each analytical procedure had one or more components to analyse. For the examination of algal extractives, gas chromatography (GC) and high-performance liquid chromatography (HPLC) are both widely utilised techniques.⁵⁷ The most accurate and popular method for separating a variety of substances is HPLC. Pharmaceutical grade analysis has been carried out using (LC-MS) and (GC-MS) technologies.⁵⁸ One of the often used analytical techniques is reversed-phase high-performance liquid chromatography (RP-HPLC), although this technology is unable to distinguish between highly polar and less polar substances, according to Herrero et al.⁵⁹ Fast SFE extracts characterisation utilising capillary electrophoresis with diode array detection (CE-DAD) is thought to be a good alternative to RP-HPLC since it exhibits faster application times, more efficiency, and greater selectivity than HPLC.^{60,61} Many researches used 1D, 2D NMR, MS/MS, HPLC, and chiral GC-MS analyses to conduct complete structure characterization of bioactive natural compounds.^{62–65} Algal fatty acids were evaluated by LC-MS and GC-FID to determine their methyl or ethyl esters between 2005 and 2010, as described by Bernal et al.⁶⁶ in their explanation of analysis methodology.⁶⁶ Gas chromatography (GC) in conjunction with several detection methods, including ECD, FID, and MS as well as HPLC, when coupled to one of the following detection systems,

is used to identify lipids: We advised PDA, UV, MS, and MS/MS. Other recommended analysis methods were mass spectrometry (MS) and nuclear magnetic resonance (NMR). Terpenes can be analysed using GC-MS, HPLC-UV-MS, or NMR, however NMR is preferable for structure investigation. Bernal et al.⁶⁶ have enumerated various analytical methodologies employed in the identification and quantification of carotenoids, including High-Performance Liquid Chromatography (HPLC) equipped with Diode Array Detection (DAD) or Ultraviolet (UV) detectors. The fusion of Liquid Chromatography with Photodiode Array (PDA) and Mass Spectrometry (MS) detectors has demonstrated heightened sensitivity in the detection of both carotenoids and carotenoid esters.^{67–72} In the context of analyzing carotenoids with antioxidant and anti-cancer properties, such as β -carotene, the utilization of HPLC with UV/Vis or DAD detection has been recommended.

5. Case I

L. MacKinnon et al. conducted an investigation titled "Analysis of Betaines from Marine Algae Using LC-MS-MS." This study focused on the analysis of betaines, which belong to a category of quaternary ammonium compounds present in marine algae. These compounds have the capacity to function as osmolytes and have the potential to influence gene expression. Consequently, they hold the promise of enhancing plant tolerance to various stressors such as extreme temperatures, drought, and salinity when applied to agricultural crops. In human biology, glycine betaine serves as a methyl donor and has exhibited protective effects on internal organs, enhancement of vascular risk factors, and improvement of athletic performance.

Using thin layer chromatography and NMR methods, more than 13 betaine analogues have been found in the seaweeds Chlorophyta (green), Heterokontophyta (brown), and Rhodophyta (red).⁷³ Thin layer chromatography,⁷⁴ thin layer electrophoresis,⁷⁵ and non-specific precipitation reagents were early analytical techniques used to quantify betaines in plants, seaweeds, or commercial seaweed extracts.^{76,77} Since the late 1970s, there has been continuing development of an HPLC-based method for betaine analysis.⁷⁸ Due to their weak chromophoric moiety, betaines do not glow noticeably and are only detectable at low UV wavelengths (190–220 nm).⁷⁹ Because betaines aren't reactive to several reagents, attempts to raise the detection limits of betaines using those reagents haven't produced adequate results.⁸⁰ The limitation of proton magnetic resonance (¹H NMR) as a technique for betaine analysis for seaweed extracts and plant material is that it is unable to measure the concentrations of betaines that are present as small components.⁸¹

The present study outlines a Liquid Chromatography-Tandem Mass Spectrometry (LC-MS-MS) technique for the quantification of betaines within seaweed specimens

and commercially available seaweed extract products. This method involves a swift sample preparation and purification protocol. Leveraging the heightened sensitivity and specificity of LC-MS-MS, this approach proves to be well-suited for the systematic evaluation of glycine betaine, γ -aminobutyric acid betaine, δ -amino-valeric acid betaine, and laminine.^{82,83}

6. Case II

The chemical components residing within *Streptomyces* sp. strain Al-Dhabi-97, which was isolated from a marine locale, were scrutinized by Naif Abdullah Al-Dhabi et al.⁸⁴ The constituents were subjected to analysis using Gas Chromatography-Mass Spectrometry (GC-MS) in conjunction with Mass Spectrometry, a technique chosen for the purpose of characterizing the individual elements within the ethyl acetate extract derived from the Al-Dhabi-97 isolate. The instrumental setup involved coupling the GC-MS apparatus with a capillary column, where the samples were separated and eluted through the application of low-pressure helium gas at a flow rate of 1000 mL/min.⁸⁵ The temperature of the column was programmed to range from 40°C to 280°C, while the temperature at which the samples were injected stood at 280°C.

7. Conclusion

The nomenclature of marine-derived materials is continually evolving due to the rapid discovery of new compounds exhibiting novel functionalities. From a prospective standpoint, exploring novel sources within diverse marine biomes presents an avenue for investigating analogs with enhanced activity, selectivity, and reduced toxicity. Supercritical Fluid Extraction (SFE) holds significance due to its intermediate diffusivity and viscosity values, positioned between gases and liquids. Supercritical fluid extraction proves advantageous by enabling faster and more efficient extraction, owing to its thorough penetration into biomass structures. Since its groundbreaking discovery, SFE has emerged as a highly efficient extraction method across multiple domains.

Ongoing advancements in nanotechnology offer potential to facilitate the separation and identification of highly functional entities. These practices have the potential to open new avenues for research and development in the near future. In this context, the investigation of bioactive marine compounds is anticipated to persist as a focal point across diverse sectors. Moreover, this pursuit stands to revolutionize and broaden the utilization and applicability of these novel natural sources. In summation, the marine domain is poised to remain a subject of intensive research endeavors spanning various contemporary sectors.

The progression of sophisticated analytical techniques is imperative within algae research to effectively characterize, identify, and quantify natural constituents within studied

species. Amid the array of analytical technologies, including High-Performance Liquid Chromatography (HPLC), Gas Chromatography (GC), Thin-Layer Chromatography (TLC), Mass Spectrometry (MS), and Nuclear Magnetic Resonance (NMR), certain methods employ combined approaches like HPLC-MS, GC-MS, and HPLC with Diode Array Detection (HPLC DAD) for comprehensive and precise identification and quantification of target compounds.

8. Source of Funding

None.

9. Conflict of Interest

None.

10. Acknowledgment

We would like to express our gratitude to SKBCOP, Kamptee, for providing the facility.

References

- David B, Wolfender JL, Dias JL. The pharmaceutical industry and natural products: historical status and new trends. *Phytochem Rev.* 2015;14(2):299.
- Carroll AR, Copp BR, Davis RA, Keyzers RA, Prinsep MR. Marine natural products. *Nat Prod Rep.* 2001;202(2):362–413.
- Alves C, Silva J, Pinteus S, Gaspar H, Alpoim MC, Botana LM. From Marine Origin to Therapeutics: The 469 Antitumor Potential of Marine Algae-Derived Compounds. *Front Pharmacol.* 2018;9:777. doi:10.3389/fphar.2018.00777.
- Burja AM, Banaigs B, Aboumansour E, Burgees JG, Write PC. Marine cyanobacteria a prolific source of natural products. *Tetrahedron.* 2001;57:9347–77.
- Bhadury P, Wright PC. Exploitation of marine algae: biogenic compounds for potential antifouling applications. *Planta.* 2004;219:561–78.
- Smit AJ. Medicinal and pharmaceutical uses of seaweed natural products: A review. *J Appl Phycol.* 2004;16:245–62.
- Kim SK. Handbook of Marine Macroalgae. John Wiley & Sons; 2011. Available from: <https://onlinelibrary.wiley.com/doi/book/10.1002/9781119977087>.
- García-Pérez JS, Padilla FR, Cuellar-Bermudez SP, Arévalo-Gallegos A, Saldivar RP, Yoe RZ, et al. Thermodynamics and statistical correlation between supercritical-CO₂ fluid extraction and bioactivity profile of locally available Mexican plants extracts. *J Supercrit Fluids.* 2017;122:27–34.
- García-Pérez JS, Cuellar-Bermúdez SP, Gallegos AA, Rodríguez J, Iqbal HMN, Saldivar RP, et al. Identification of bioactivity, volatile and fatty acid profile in supercritical fluid extracts of Mexican arnica. *Int J Mol Sci.* 2016;17(9):1528.
- García-Pérez JS, Bermúdez C, Arévalo-Gallegos SP. Influence of super critical CO₂ extraction on fatty acids profile, volatile compounds and bioactivities from *Rosmarinus officinalis*. *Waste and Biomass Valorization.* 2018;p. 1–11.
- Rosenthal A, Pyle DL, Niranjana K. Aqueous and enzymatic processes for edible oil extraction. *Enzym Microb Technol.* 1996;19(6):402–20.
- Singh RK, Sarker BC, Kumbhar BK, Agrawal YC, Kulshreshtha MK. Response surface analysis of enzyme assisted oil extraction factors for sesame, groundnut and sunflower seeds. *J Food Sci Technol.* 1999;36(6):511–4.

13. Fleurence J, Massiani L, Guyader O, Mabeau S. Use of enzymatic cell wall degradation for improvement of protein extraction from *Chondrus crispus*. *J Appl Phycol*. 1995;7:393–7.
14. P. Gracilaria verrucosa and *Palmaria palmata*. *J Appl Phycol*. 1995;7(4):393–7.
15. Shen L, Wang X, Wang Z, Wu Y, Chen J. Studies on tea protein extraction using alkaline and enzyme methods. *Food Chem*. 2008;107(2):929–38.
16. Kim YH, Choi YK, Park J, Lee S, Yang YH, Kim HJ, et al. Ionic liquid-mediated extraction of lipids from algal biomass. *Bioresour Technol*. 2012;109:312–5.
17. Alam M, Sarker M, Ghafoor K, Happy RA, Ferdosh S. Bioactive compounds and extraction techniques. *Recovering Bioactive Compounds from Agricultural Wastes*. 2017;p. 33–53.
18. Zacconi FC, Cabrera AL, Retamales FO, Valle JM, Juan C. Isothermal solubility in supercritical carbon dioxide of solid derivatives of 2, 3- dichloronaphthalene-1, 4-dione (dichlone): 2-(Benzylamino)-3- chloronaphthalene-1, 4-dione and 2-chloro-3-(phenethylamino) naphthalene-1, 4-dione. *J Supercrit Fluids*. 2017;129:75–82.
19. Roodpeyma M, Guigard SE, Stiver WH. Pressure control of a continuous pilot scale supercritical fluid extraction (SFE) process. *J Supercrit Fluids*. 2018;135:120–9.
20. Núñez GA, Valle JM, Navia D. Supercritical CO₂ oilseed extraction in multivessel plants. 3. Effect of extraction pressure and plant size on production cost. *J Supercrit Fluids*. 2017;122:109–18.
21. Crespi F, Gavagnin G, Sánchez D, Martínez GS. Analysis of the thermodynamic potential of supercritical carbon dioxide cycles: a systematic approach. *J Eng Gas Turbines Power*. 2018;140(5):51701–10.
22. Wang L, Weller CL. Recent advances in extraction of nutraceuticals from plants. *Trends Food Sci Technol*. 2006;17(6):300–12.
23. Uy SF, Easteal AJ, Farid MM, Keam RB, Conner GT. Seaweed processing using industrial single-mode cavity microwave heating: a preliminary investigation. *Carbohydr Res*. 2005;340(7):1357–1364.
24. Navarro DA, Flores ML, Stortz CA. Microwave-assisted desulfation of sulfated polysaccharides. *Carbohydr Polym*. 2007;69(4):742–7.
25. Chhatbar M, Meena R, Prasad K, Siddhanta AK. Microwave assisted rapid method for hydrolysis of sodium alginate for M/G ratio determination. *Carbohydr Polym*. 2009;76(4):650–656.
26. Sousa AM, Alves VD, Morais S, Matos SD, Gonçalves MP. Agar extraction from integrated multitrophic aquacultured *Gracilaria vermiculophylla*: evaluation of a microwave-assisted process using response surface methodology. *Bioresour Technol*. 2010;101(9):3258–67.
27. Rodriguez-Jasso RM, Mussatto SI, Pastrana L, Aguilar CN, Teixeira JA. Microwave-assisted extraction of sulfated polysaccharides (fucoidan) from brown seaweed. *Carbohydr Polym*. 2011;86(3):1137–44.
28. Yuan Y, Macquarrie D. Microwave assisted extraction of sulfated polysaccharides (fucoidan) from *Ascophyllum nodosum* and its antioxidant activity. *Carbohydr Polym*. 2015;129:101–7.
29. Ying Z, Han X, Li J, Letellier M, Budzinski H. Ultrasound-assisted extraction of polysaccharides from mulberry leaves. *Food Chem*. 1999;127(3):259–70.
30. Mandal V, Mohan Y, Hemalatha S. Microwave assisted extraction—an innovative and promising extraction tool for medicinal plant research. *Pharmacogn Rev*. 2007;1(1):7–18.
31. Michanek G. Getting seaweed to where it's needed. *Ceres*. 1981;14:41–5.
32. Bonotto S. List of multicellular algae of commercial use. In: Marine Algae in Pharmaceutical Science. vol. 1. and others, editor; 1979. p. 121–8.
33. Hoppe HA. Marine algae and their products and constituents in pharmacy. In: and others, editor. In: Marine Algae in Pharmaceutical Science; 1979. p. 25–119.
34. Gross R, Gross U, Ramirez A, Cuadra K, Collazos C, Feldheim W. Nutritional tests with green alga *Scenedesmus* with healthy and malnourished persons. *Arch Hydrobiol Beih*. 1978;11:161–4.
35. Pooja S. Algae used as medicine and food a short review. *J Pharm Sci Res*. 2014;6:33–8.
36. Yuvaraj N, Arul V. In vitro antitumor, anti-inflammatory, antioxidant and antibacterial activities of marine brown alga *Sargassum wightii* collected from gulf of mannar. *Global J Pharmacol*. 2014;8:566–73.
37. Richardson JS. Free radicals in the genesis of Alzheimers disease. *Annals New York Acad Sci*. 1993;695:7376.
38. Escrig AJ, Sánchez-Muniz FJ. Dietary fibre from edible seaweeds: Chemical structure, physicochemical properties and effects on cholesterol metabolism. *Nutr Res*. 2000;20:585–93.
39. Kolanjinathan K, Stella D. Pharmacological effect of *Gracilaria corticata* solvent extracts against human pathogenic bacteria and fungi. *Int J Pharm Biol Arch*. 2011;2:1722–30.
40. Vijayabaskar P, Shiyamala V. Antibacterial activities of marine brown algae (*Sargassum wightii* and *Turbinaria ornata*) from the gulf of mannar biosphere reserve. *Adv Biol Res*. 2011;5:99–102.
41. Karthikaidevi G, Manivannan K, Thirumaran G, Anantharaman P, Balasubramanian T. Antibacterial properties of selected green seaweeds from vedalai coastal waters; the gulf of mannar marine biosphere reserve. *Glob J Pharmacol*. 2009;3(2):107–9.
42. Mohammed NA, Choi JS, Lee MC, Kim E, Nam TJ, Fujii H. Anti-inflammatory activities of methanol extracts from various seaweed species. *J Environ Biol*. 2008;29:465–474.
43. Teas J. The consumption of seaweed as a protective factor in the aetiology of breast cancer. *Med Hypotheses*. 1981;7:601–4.
44. Ghislain M, Kwak DH, Brice WO, Maranguy CA, Sylvatrie DB, Lee DH, et al. Anticancer effects of different seaweeds on human colon and breast cancers. *Marine Drugs*. 2014;12(9):4898–911.
45. Loeser AA. Hormones and breast cancer. Letters to the Editor. *Lancet*. 1956;p. 961.
46. Abirami RG, Kowsalya S. Antidiabetic activity of *Ulva fasciata* and its impact on carbohydrate enzymes in alloxan induced diabetic in rats. *Int J Res Phytochem Pharmacol*. 2013;3(3):136–7.
47. Zhang Z, Chen M, Lian XCW. Application of *Streptomyces* Antimicrobial Compounds for the Control of Phytopathogens. *CN107619803A*. 2018; Available from: <https://www.frontiersin.org/articles/10.3389/fsufs.2021.696518/full>.
48. Kuniyoshi M, Yamada K, Higat HH. A biologically active diphenyl ether from the green alga *Cladophora fascicularis*. *Experientia*. 1985;41:523–7.
49. Puglisi P, Tan LT, Jensen PR, Fenicalw FF. Capisterones A and B from the tropical green alga *Penicillus capitatus*: Unexpected antifungal defenses targeting the marine pathogen *Lindra thalassiae*. *Tetrahedron*. 2004;60:7035–44.
50. Tariq VN. Antifungal activity in crude extracts of marine red algae. *Mycol Res*. 1991;95(12):1433–5.
51. Mickymaray S, Alturaiki W. Antifungal efficacy of marine macroalgae against fungal isolates from bronchial asthmatic cases. *Molecules*. 2018;23:3032.
52. Crespo DS, Díez RC, Jimenez JL. Mechanistic studies of viral entry: an overview of dendrimer-based microbicides as entry inhibitors against both HIV and HSV-2 overlapped infections. *Med Res Rev*. 2017;37(1):149–79.
53. Ale MT, Mikkelsen JD, Meyer AS. Review of structure-function relations and extraction methods for fucose-containing sulfated polysaccharides from brown seaweeds. *Mar Drugs*. 2011;9:2106–30.
54. Yu G, Hu Y, Yang B, Zhao X, Wang P, Ji G, et al. Extraction, isolation and structural characterization of polysaccharides from a red alga *Gloiopeltis furcata*. *J Ocean Univ China*. 2010;9:193–7.
55. Richardson JS. Free radicals in the genesis of Alzheimer s disease. *Ann N Y Acad Sci*. 1993;695:73–9.
56. Kohen R, Andnyska A. Oxidation of biological systems: Oxidative stress phenomena, antioxidants, redox reactions, and method for their quantification. *Toxicol Pathol*. 2002;30(6):620–50.
57. Athukorala Y, Kilnamkim J. Antiproliferative and antioxidant properties of an enzymatic hydrolysate from brown alga. *Ecklonia Cava Food Chem Toxicol*. 2005;4:10651074.
58. Chen JY, Latshaw JD, Lee HO, Min DB.) alpha-Tocopherol content and oxidative stability of egg yolk as related to dietary alpha-tocopherol. *J Food Sci*. 1998;63:919–22.

59. Herrero M, Ibáñez E, Señoráns J, Cifuentes A. Pressurized liquid extracts from *Spirulina platensis* microalga: Determination of their antioxidant activity and preliminary analysis by micellar electrokinetic chromatography. *J Chromatogr*. 2004;1047(2):195–203.
60. Ong ES. Extraction methods and chemical standardization of botanicals and herbal preparations. *J Chromatogr B Analyt Technol Biomed Life Sci*. 2004;812(1):23–33.
61. Mendes RL, Nobre BP, Cardoso MT, Pereira AP, Palavra AF. Supercritical carbon dioxide extraction of compounds with pharmaceutical importance from microalgae. *Inorganica Chimica Acta*. 2003;356:328–34.
62. Henry MC, Yonker CR. Supercritical fluid chromatography, pressurized liquid extraction, and supercritical fluid extraction. *Anal Chem*. 2006;78:3909–16.
63. Demirbas AD, Fatih M. Energy from Algae. *Algae Energy*. 2010;1(5):763–84.
64. Ryckebosch E, Muylaert K, Foubert I. Optimization of an Analytical Procedure for Extraction of Lipids from Microalgae. *J Am Oil Chem Soc*. 2012;89:189–98.
65. Kim YH, Choi YK, Park J, Lee S. Ionic liquid-mediated extraction of lipids from algal biomass. *Bioresour Technol*. 2012;109:312–5.
66. Sanzo GD, Mehariya S, Martino M, Larocca V, Casella P, Chianese S, et al. Supercritical carbon dioxide extraction of astaxanthin and other carotenoids from the microalga *Haematococcus pluvialis*. *Eur Food Res Technol*. 2006;16(9):787–90.
67. Plaza M, Herrero M, Cifuentes A, Ibáñez E. Innovative natural functional ingredients from microalgae. *J Agric Food Chem*. 2009;57:7159–70.
68. Mendiola JA, Jaime L, Santoyo S, Reglero G, Cifuentes A. Screening of functional compounds in supercritical fluid extracts from *Spirulina platensis*. *Food Chem*. 2007;102:1357–67.
69. Babiá S, Asperger D, Mutavdzia D, Horvat AJ. Kastelan-Macan M Solid phase extraction and HPLC determination of veterinary pharmaceuticals in wastewater. *Talanta*. 2006;70(4):732–8.
70. Tan LT. Bioactive natural products from marine cyanobacteria for drug discovery. *Phytochemistry*. 2007;68(7):954–79.
71. Arman M, Qader S. Structural analysis of kappa-carrageenan isolated from *Hypnea musciformis* (red algae) and evaluation as an elicitor of plant defense mechanism. *Carbohydrate Polymers*. 2012;88:1264–71.
72. Hou Y, Liang L, Zhang S, Cheng F, Zhenbin HE. Freshwater algae chemotaxonomy by high-performance liquid chromatographic (HPLC) analysis. *Front Environ Sci Eng China*. 2011;5:84–91.
73. Xu N, Fan X, Yan X, Tseng CK. Screening marine algae from China for their antitumor activities. *J Appl Phycol*. 2004;16:451–6.
74. Blunden G, Smith BE, Irons MW, Yang HH, Roch OG, Patel Betaines and tertiary sulphonium compounds from 62 species of marine algae. *Biochem Syst Ecol*. 1992;20(4):373–88.
75. Tyihak E, Blunden G, Ma YC. Quantitative estimation of betaines in commercial seaweed extracts using over pressured layer chromatography. *J Appl Phycol*. 1994;6:469–73.
76. Blunden G, Rogers DJ, Barwell CJ. Biologically-active compounds from British marine algae. *Munksgaard*. 2010;p. 179–90.
77. Müller H, Eckert H. Simultaneous determination of monoethanolamine and glycine betaine in plants. *J Chromatogr*. 1989;479:452–8.
78. Gorham J, Coughlan SJ, Jones RSR. Estimation of quaternary ammonium and tertiary sulphonium compounds by thin-layer electrophoresis and scanning reflectance densitometry. *J Chromatogr*. 1981;210:550–554.
79. Barak A, Tuma D. Simplified procedure for determination of betaine in liver. *Lipids*. 1979;14:860–3.
80. Bao W, Gao S, Fan Z. Isolation and identification of betaine from beet molasses and its quantitative determination. *J Shenyang Coll Pharm*. 1989;6:12–15.
81. Dupuy P. Analytical recognition of chaptalization (addition of sugar to wine after fermentation). *Ann Nutr Alim*. 1978;32:1123–1132.
82. Zamarreño A, Cantera RG, Garcia-Mina JM. Extraction and determination of glycine betaine in liquid fertilizers. *J Agric Food Chem*. 1997;45:774–776.
83. Lever M, Bason C, Leaver CM, Hayman ST, Chambers. Same-day measurement of glycine betain carnitine and other betaines in biological material. *Anal Bio chem*. 1992;205:14–21.
84. Blunden G, Cripps AL, Gordon TG, Mason CH, Turner. The characterization and quantitative estimation of betaines in commercial seaweed extracts. *Bot*; 1986. p. 155–160.
85. MacKinnon SL, Craft C. Analysis of Betaines from Marine Algae Using LC-MS-MS. *Methods Mol Biol*. 2015;1308:267–75.

Author biography

Krishna R. Gupta, Professor and HOD

Tejaswini P. Masne, PG Student

Milind J. Umekar, Principal and Professor

Cite this article: Gupta KR, Masne TP, Umekar MJ. Marine plants: Extraction and their medicinal importance. *Int J Pharm Chem Anal* 2023;10(3):185-193.